

DESIGNER / BUILDER

**ARCO**  
DESIGN/BUILD  
INDUSTRIAL

44 SOUTH BROADWAY, SUITE 1003  
WHITE PLAINS, NY 10601  
P: 914.821.5535 F: 914.306.6010

**ADBI** | DESIGN  
SERVICES

PROJECT TITLE

**LINCOLN  
EQUITIES -  
NY-131- BLDG A**

**NY-312 & PUGSLEY RD,  
SOUTHEAST, NY 10509**

ARCHITECT

ADBI / DESIGN SERVICES LLC  
44 SOUTH BROADWAY, SUITE 1003  
WHITE PLAINS, NY 10601

CIVIL ENGINEER

LANGAN ENGINEERING  
300 KIMBALL DRIVE  
PARSIPPANY, NJ 07054

STRUCTURAL ENGINEER

SMITH/ROBERTS AND ASSOCIATES, INC.  
6501 BLUFF RD.  
INDIANAPOLIS, INDIANA 46217

MECHANICAL ENGINEER

NATIONAL DESIGN/BUILD SERVICES  
11840 BORMAN DRIVE  
ST. LOUIS, MO 63146

ELECTRICAL ENGINEER

FXB ENGINEERING  
5 CHRISTY DRIVE, SUITE 307  
CHADDS FORD, PA 19317

PLUMBING ENGINEER

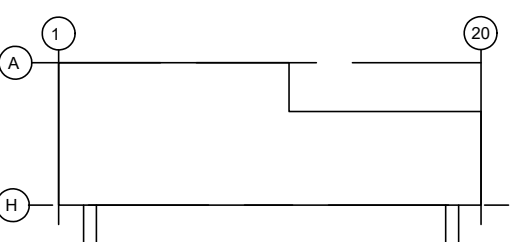
MCCARTHY ENGINEERING ASSOCIATES,  
INC.  
315 EAST SECOND STREET  
BOYERTOWN, PA 19512

FIRE PROTECTION ENGINEER

S A COMUNALE CO. INC.  
2900 NEWPARK DRIVE  
BARBERTON, OH 44203

SEAL

KEY PLAN



SUBMITTALS

NO.	DATE	DESCRIPTION
A	05.27.22	ISSUE FOR REVIEW
0	06.10.22	ISSUE FOR PERMIT

PROJECT NO.

AS286-21 | NY131

DRAWN BY

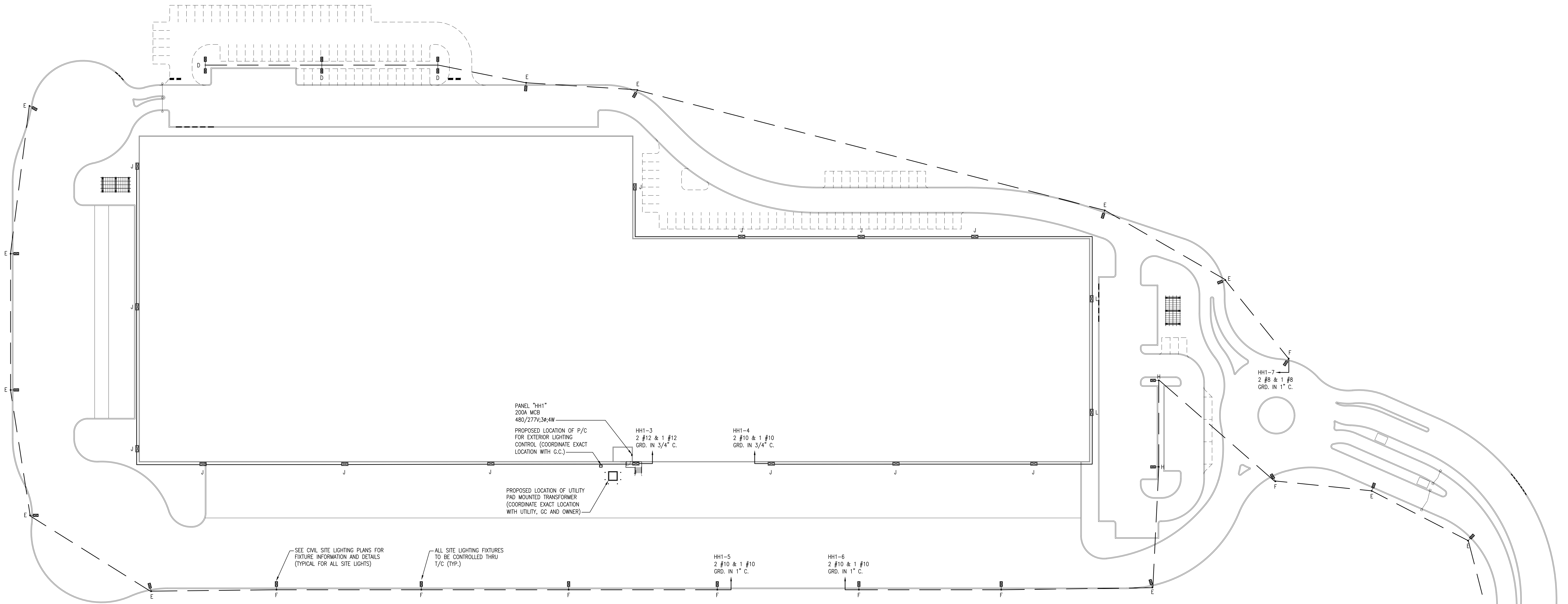
FXB

SHEET TITLE

**ELECTRICAL  
SITE PLAN**

SHEET NO.

**ESP1.0**

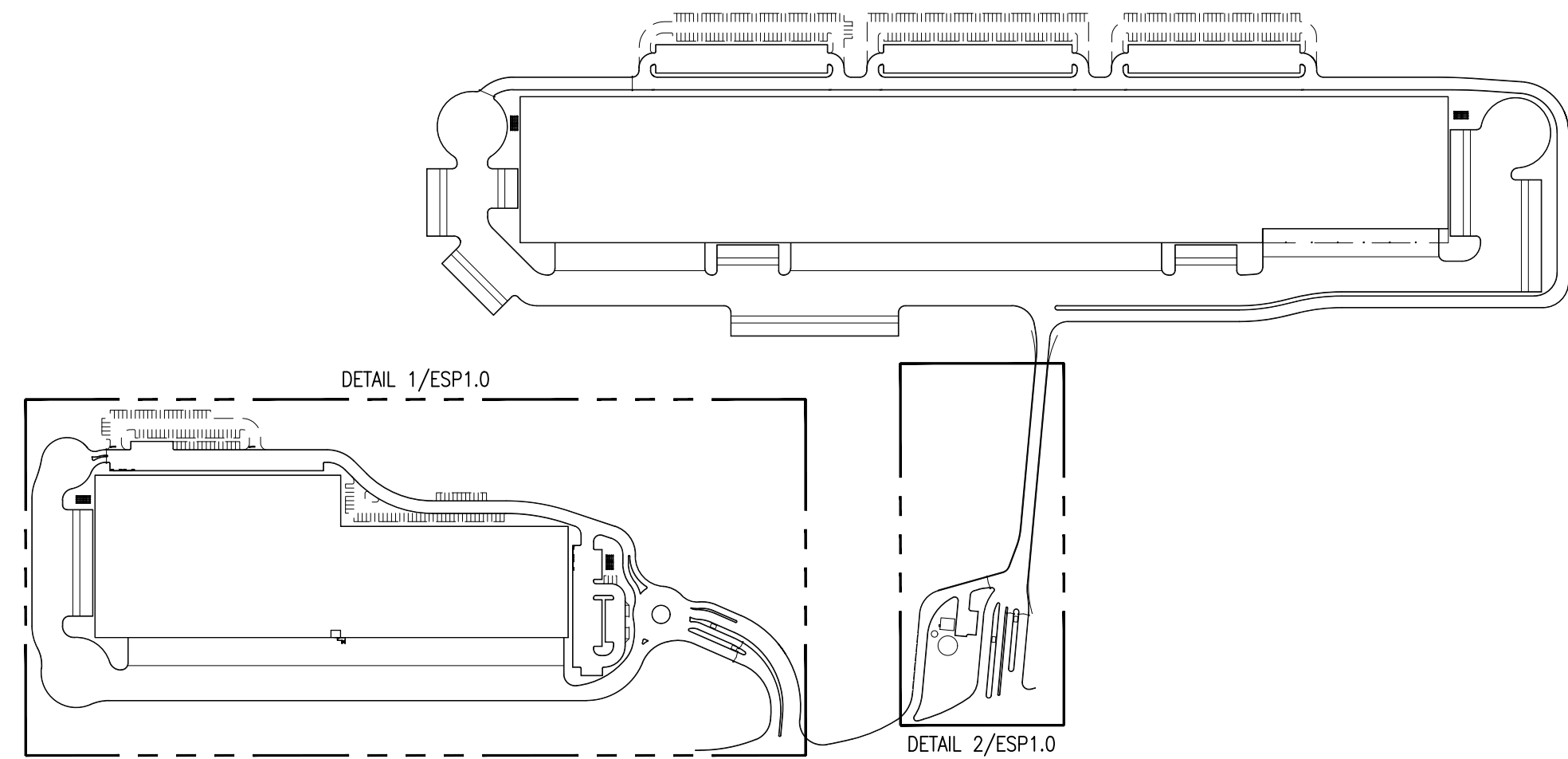


## 1 ELECTRICAL SITE PLAN

ESP1.0 SCALE: 1" = 45'-0"

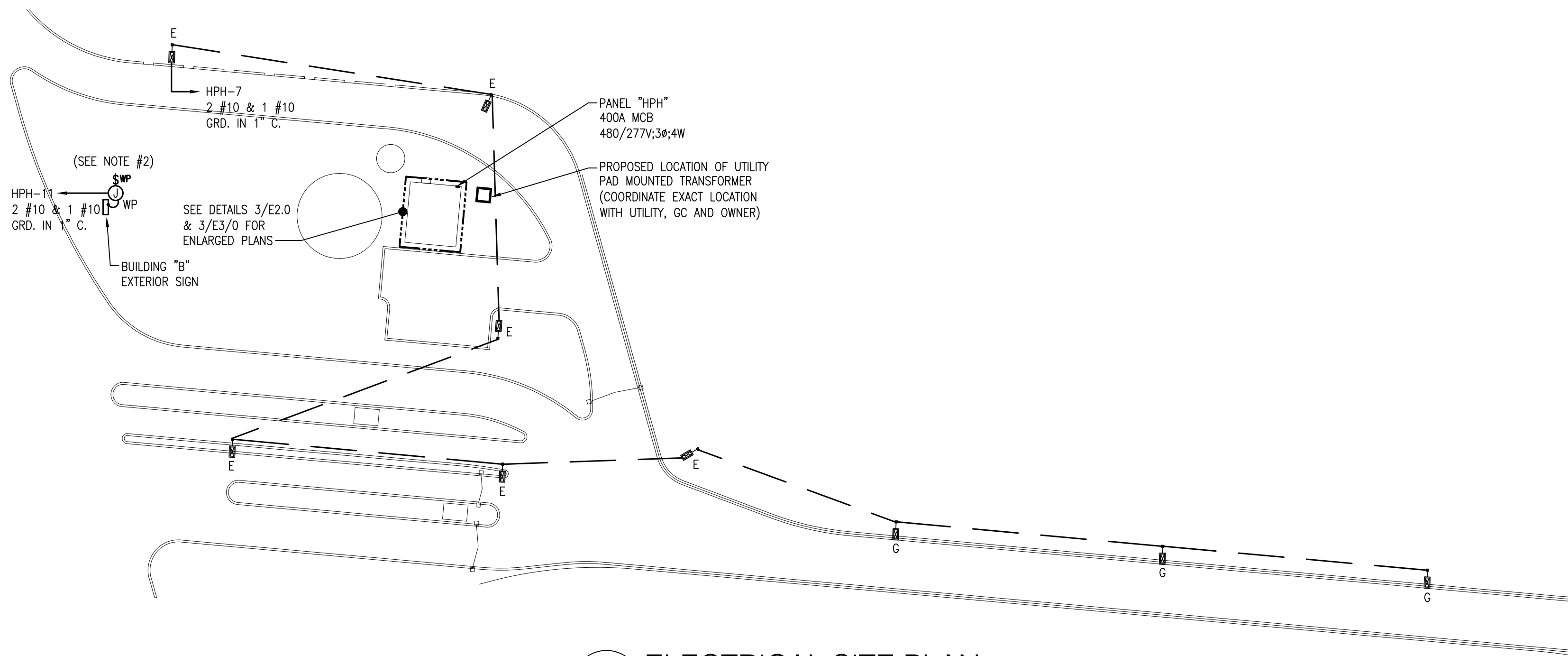
NOTES:

1. ALL SHOWN IS NEW & BY EC UNLESS SPECIFICALLY NOTED OTHERWISE.
2. PROVIDE AN ACCESSIBLE WEATHERPROOF DISCONNECT SWITCH & J-BOX FOR EACH EXTERIOR SIGN IN ACCORDANCE WITH NEC 600.6. COORDINATE EXACT LOCATIONS, QUANTITIES & REQUIREMENTS WITH OWNER, ARCHITECT & SIGNAGE CONTRACTOR IN FIELD



## KEY PLAN

SCALE: NONE



## 2 ELECTRICAL SITE PLAN

ESP1.0 SCALE: 1" = 45'-0"

NOTES:

1. ALL SHOWN IS NEW & BY EC UNLESS SPECIFICALLY NOTED OTHERWISE.
2. PROVIDE AN ACCESSIBLE WEATHERPROOF DISCONNECT SWITCH & J-BOX FOR EACH EXTERIOR SIGN IN ACCORDANCE WITH NEC 600.6. COORDINATE EXACT LOCATIONS, QUANTITIES & REQUIREMENTS WITH OWNER, ARCHITECT & SIGNAGE CONTRACTOR IN FIELD